

Adap. a dolç: Concerto en do menor per a oboè 1  
Xavier Richart B. Marcello (1686-1739)

Dolçaina

3

7

10

15

19

24

28

31

36

40

44

49

56

2

3

3

# Concerto en do menor per a oboè 2

Adap. a dolç:  
Xavier Richart

B. Marcello (1686-1739)

Adagio

3

9

13

17

20

23

26

29

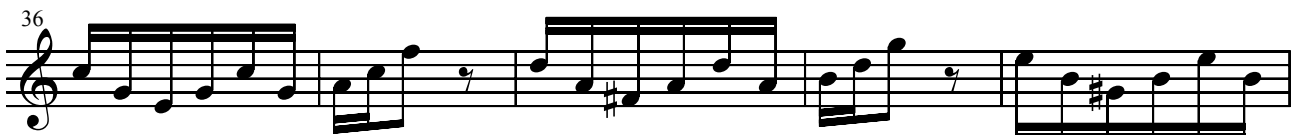
32

# Concerto en do menor per a oboè 3

Adap. a dolç:  
Xavier Richart

B. Marcello (1686-1739)

Allegro



63 Musical staff 63-69. Treble clef, key signature of one sharp (F#). Measure 63 starts with a treble clef and a sharp sign. Measure 67 contains a whole rest with a '2' above it, indicating a double bar line. The staff contains eighth and sixteenth notes.

70 Musical staff 70-75. Treble clef, key signature of one sharp (F#). Measure 70 starts with a treble clef and a sharp sign. The staff contains eighth and sixteenth notes.

76 Musical staff 76-81. Treble clef, key signature of one sharp (F#). Measure 76 starts with a treble clef and a sharp sign. The staff contains eighth and sixteenth notes.

82 Musical staff 82-89. Treble clef, key signature of one sharp (F#). Measure 82 starts with a treble clef and a sharp sign. Measure 85 contains a whole rest with a '3' above it, indicating a triple bar line. The staff contains eighth and sixteenth notes.

90 Musical staff 90-95. Treble clef, key signature of one sharp (F#). Measure 90 starts with a treble clef and a sharp sign. The staff contains eighth and sixteenth notes.

96 Musical staff 96-101. Treble clef, key signature of one sharp (F#). Measure 96 starts with a treble clef and a sharp sign. The staff contains eighth and sixteenth notes.

102 Musical staff 102-107. Treble clef, key signature of one sharp (F#). Measure 102 starts with a treble clef and a sharp sign. The staff contains eighth and sixteenth notes.

108 Musical staff 108-115. Treble clef, key signature of one sharp (F#). Measure 108 starts with a treble clef and a sharp sign. Measure 110 contains a whole rest with a '3' above it, indicating a triple bar line. The staff contains eighth and sixteenth notes.

116 Musical staff 116-121. Treble clef, key signature of one sharp (F#). Measure 116 starts with a treble clef and a sharp sign. The staff contains eighth and sixteenth notes.

122 Musical staff 122-127. Treble clef, key signature of one sharp (F#). Measure 122 starts with a treble clef and a sharp sign. The staff contains eighth and sixteenth notes, ending with a fermata over a half note.