

La Guirigall

Tornada

Dolçaina 1

Dolçaina 2ª

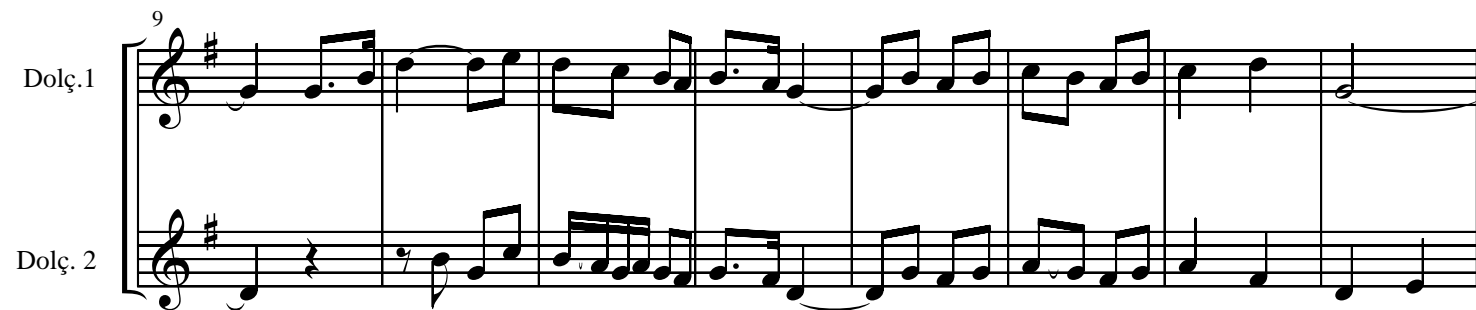


The first system of the Tornada section consists of two staves. The top staff is labeled 'Dolçaina 1' and the bottom staff is labeled 'Dolçaina 2ª'. Both staves are in treble clef with a key signature of one sharp (F#) and a time signature of 2/4. The music begins with a rest in the first measure, followed by a series of eighth and sixteenth notes, including some beamed sixteenth notes in the second staff.

9

Dolç.1

Dolç. 2

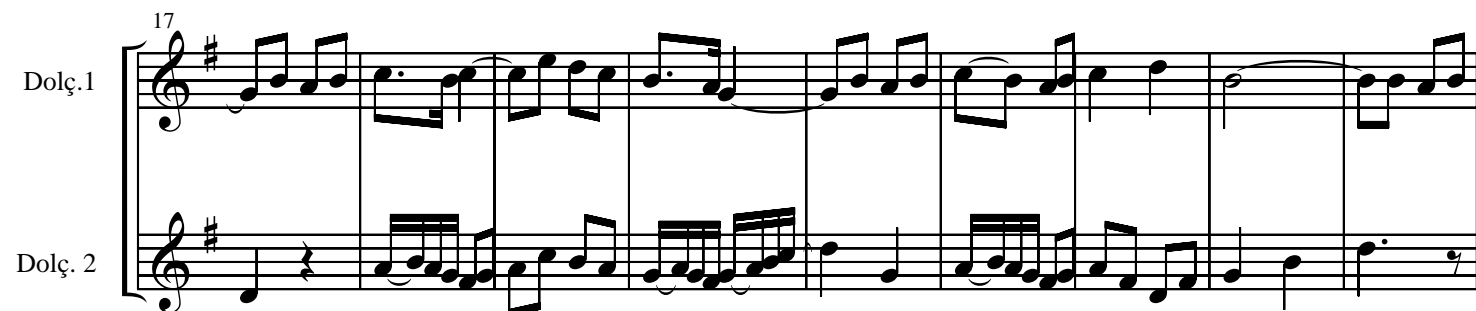


The second system of the Tornada section starts at measure 9. It features two staves: 'Dolç.1' on top and 'Dolç. 2' on the bottom. The notation continues with eighth and sixteenth notes, maintaining the 2/4 time signature and one sharp key signature.

17

Dolç.1

Dolç. 2



The third system of the Tornada section starts at measure 17. It features two staves: 'Dolç.1' on top and 'Dolç. 2' on the bottom. The notation continues with eighth and sixteenth notes, maintaining the 2/4 time signature and one sharp key signature.

26

Dolç.1

Dolç. 2



The fourth system of the Tornada section starts at measure 26. It features two staves: 'Dolç.1' on top and 'Dolç. 2' on the bottom. The notation continues with eighth and sixteenth notes, maintaining the 2/4 time signature and one sharp key signature. The system concludes with a double bar line.

Estrofes de " La Guirigall "

Jacint Hernández



2ª Estrofa de La Guirigall

Jacint Hernández

Dolçaina

8

15

22

29

3^a Estrofa de La Guirigall

Jacint Hernández

Dolçaina

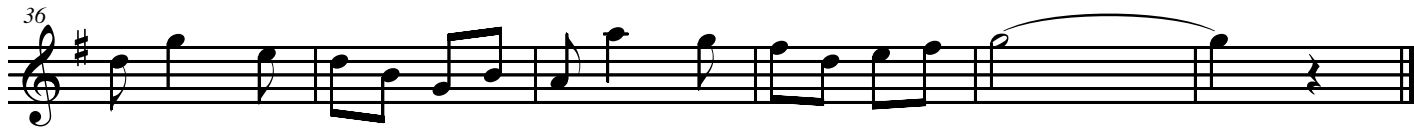
7

14

4^a Estrofa de La Guirigall

Jacint Hernández

Dolçaina



5ª Estrofa de La Guirigall

Guillem Taverner

Dolçaina

8

15

22

29